

## Instruction manual

### Electronic Blaine Air-Permeability Apparatus Dyckerhoff System



**Importance of this Operating Manual:**

**Warning:** It is expected that Users and Operators read and understand this entire Operating Manual before putting the system into operation. Reading and understanding this entire Operating Manual is absolutely necessary before operating the system.

**Contents**

**Page no.:**

<b>1. General information</b>	<b>3</b>
1.1 Manufacturer's designation	3
1.2 Purpose for which this system has been designed	3
1.3 Conditions under which this system may NOT be used	4
1.4 Guarantee	4
1.5 Safety instructions	5
1.6 Acceptance of the product and transport	6
1.6.1 Acceptance of the product	6
1.6.2 Transport	7
1.7 Scope of delivery	7
1.8 Instructions for electrical connection	8
<b>2. Characteristics of the apparatus</b>	<b>8</b>
2.1 Basic structural design	8
2.2 Technical data	9
<b>3. Placing into operation</b>	<b>9</b>
3.1 Setting up the apparatus	9
3.2 Connection of the measuring gauge (an optional component)	12
3.3 Filling the U-shaped tube	13
3.4 Calibration of the instrument	14
<b>4. Execution of the test</b>	<b>15</b>
<b>5. Maintenance and cleaning</b>	<b>16</b>
<b>6. Troubleshooting</b>	<b>17</b>
<b>7. Shutting down the system for lengthy periods</b>	<b>18</b>
<b>8. Scrapping</b>	<b>18</b>
<b>9. After-sales service</b>	<b>19</b>
9.1 Date of issue of this Operating Manual	19
9.2 Copyright	19
9.3 Contact for spare parts and technical help	19

Attachments:

EU Declaration of Conformity

Record of measurement and testing at the manufacturer's plant

Safety Data Sheet

## 1. General information

### 1.1 Manufacturer's designation

Manufacturer's designation: please see the cover page of this Operating Manual  
Designation of the model itself: Please see the nameplate (rating plate) on the unit. It provides all the characteristics and the electrical rating data.


### 1.2 Purpose for which this system has been designed

This Operating Manual contains the information required for operation of the products described here, for the purpose for which they have been designed. This Operating Manual is intended to be used only by technically qualified staff.

“Technically qualified staff” is defined as those persons who – as a result of their training; their experience; the instructions which they have received; as well as their knowledge of the relevant standards, regulations, accident-prevention regulations, and conditions of product operation in the company – have been authorized by the person responsible for the safety of the company facilities to carry out the activities and actions required for operation of the products described below, and who can recognize and prevent any possible dangers arising from such operation (this definition of technically qualified staff has been provided in IEC 364).

The User must by all means observe the requirements and limit values, as well as all safety instructions, given in this Operating Manual. Any use of this device not in conformity with these stipulations shall be considered to be in violation of the use for which this system was intended. If this device must be operated under special conditions, or with special modes of operation, then this shall be authorized only after consultation with the Manufacturer, and after obtaining his prior and express approval.

The fineness of grind can be determined according to the Blaine technique and is indicated as the specific surface (Blaine value). The apparatus serves exclusively for determination of the specific surface of powders, and for fast analysis of characteristic operational values. The Blaine value is not a measure of granulometric distribution. The Blaine value can therefore be used only to a limited degree to evaluate the suitability of a type of test material for a certain use.




<p>Caution</p> 	<p>The instructions given in this Operating Manual apply only for the correct application of the apparatus. In order to correctly conduct tests, the User and Operator must observe the specific standards that apply for the testing being conducted.</p>
--	--

Please take the time to read this Operating Manual carefully. It describes how you safely operate the machine.

Please keep this Operating Manual to hand at all times, during the entire life cycle of this apparatus. Please refer to it whenever you have a question on the operation of this apparatus.

The Manufacturer cannot accept any responsibility for any damages that occur owing to false use of this apparatus.

This operating manual contains safety instructions that are to be observed in order to exclude any risk of fatalities, injuries, damage to the equipment or improper operation. Safety markings are as follows:

<p>Caution</p> 	<p>This warning refers to dangers that could cause material damage.</p>
<p>Danger</p> 	<p>This warning refers to dangers that could cause severe injuries or even fatalities.</p>
<p>Note</p> 	<p>Provides practical advice on operation</p>

### 1.3 Conditions under which this system may NOT be used

It may therefore NOT be used under such conditions or in connection with the following actions:

- Do not disassemble this system. Do not try to repair it or to modify it.
- Operate this product only with a mains electrical system which satisfies the ratings for voltage and current as given in this Operating Manual.
- The apparatus may not be operated in locations which are subject to the following conditions or substances: Ice formation, Heat radiation, Formation of condensation water, Dust, Corrosive gases, Vibrations, Severe physical impact (jolts), High relative humidity, Excessive temperature fluctuations
- Do not tamper with the liquid in the manometer. This liquid can cause serious health.

### 1.4 Guarantee

Our **General Terms of Sales and Delivery** apply in all cases.

The Manufacturer guarantees that this Operating Manual has been prepared in conformity with the technical and functional parameters of the Blaine Apparatus as delivered. The Manufacturer reserves the right to add supplementary information to this Operating Manual as required.

The guarantee provided by the Manufacturer is the legal guarantee. This guarantee does not cover wear-and-tear parts.

The Manufacturer guarantees trouble-free operation only if the User observes the instructions in this Operating Manual, and only if the User employs the Blaine Apparatus for the purpose for which it is intended.

The Manufacturer cannot be held liable for damages that may occur if the Blaine Apparatus is used for purposes for which it is not intended, or if the User does not observe the instructions and rules for operation as set forth in this Operating Manual.

No claims for damages may be lodged against the Manufacturer if the Blaine Apparatus is modified in its structural or constructional characteristics without the prior written consent of the Manufacturer, or if its functional characteristics are modified without such consent.

Any person acting in violation of the above stipulations may be prosecuted before a court of law.

## **1.5 Safety instructions**

Only those persons may be permitted to operate the Blaine Apparatus alone (i.e., without supervision) who have met all of the following criteria:

- Persons who are at least eighteen (18) years of age, and
- Persons who have been instructed in the operation of the Blaine Apparatus, and

In the operation of the Blaine Apparatus, the person operating the instrument must take every precaution to ensure that he/she does not injure himself / herself or any other persons. Only those persons may be permitted to operate the Blaine Apparatus who have been instructed in its proper use.


If any malfunction, damage, or other trouble is determined on the Automatic Blaine Apparatus, and if its faulty condition endangers its operational safety, then the apparatus must be immediately taken out of operation. It may be put back into operation only after all sources of danger have been eliminated.

Check to make sure that the ratings given on the nameplate (rating plate) on the unit match those of the actual voltage supplied by the mains power.

The Blaine Apparatus may be used only for the purposes described here. Any use of the apparatus in a manner not intended or described here will result in loss of guarantee protection.

This Blaine Apparatus has been designed and built in accordance with the state of the engineering art and with the accepted rules of good engineering practice. The use of this Blaine Apparatus, however, can result in danger to life and limb of the Users and third parties, and can cause damage to mechanical-engineering parts and other items of property.

If there are any malfunctions or other trouble that could cause dangerous situations to arise in work with the Blaine Apparatus, these difficulties must be immediately corrected before working with the Apparatus.

<p>Danger</p> 	<p>The mixing of cement with water causes the release of alkaline substances. In working with concrete, it is essential to take all necessary precautions to prevent dry cement from entering the eyes, mouth, or nose. Use protective clothing to prevent skin contact with wet cement or concrete. If cement or concrete enters the eyes, immediately and carefully wash out the eyes with clean water. Seek medical help without delay. If moist concrete comes into contact with the skin, wash it off immediately.</p>
	<p>The manometer liquid is a mineral hydraulic oil. This liquid can cause serious health. Please read the attachments for further information.</p>

The manufacturer strongly recommends to carefully observe the following: all instructions and procedure descriptions given in this Operating Manual; all applicable safety directives, guidelines, and regulations; and all general rules for workplace environments.

The Operator must ensure that the personnel wear the respectively required protective clothing, such as:

Safety boots

Suitable clothing

Protective gloves

Working clothing must be appropriate and not hinder the operatives in their work.

If need respiratory protection

## 1.6 Acceptance of the product and transport

### 1.6.1 Acceptance of the product

When accepting delivery of the product, first inspect it for its outer, visible condition. If this inspection is satisfactory, the machine may be accepted from the freight forwarder (package service, courier, or other forwarding business).

If there are no shortcomings, and if there are no transport damages, then use the bill of delivery to make sure that the consignment is complete, and that all parts have been delivered.

If you assume or suspect transport damage, or if transport damage becomes apparent only after you have accepted the delivery, immediately make an exact report of the conditions and any damage as they exist. Send us this report immediately by fax or e-mail.

**Important:** Absolutely do not make any changes to the delivered goods.

After we have studied your report, we can make a decision whether we can correct the difficulties by one of the following options:

- Deliver spare parts to you, or

- Send a specialized fitter/installer to your plant, or
- Ask that you return the system to us for repair.

## 1.6.2 Transport

This system will be delivered in the appropriate cardboard boxes. In order to prevent transport damage, the remaining hollow spaces in the interior of the boxes will be filled with bulk material.

This system can be moved by hand to the point at which it is to be operated. Its weight is approx. 20 kg.


After you have unpacked the machine, make a visual inspection to determine whether it was damaged during transport. In cases of doubt, in which you believe the machine may have been damaged, do not connect it, and get in touch with your dealer or sales person.

## 1.7 Scope of delivery



- 1 ea. Air Permeability Tester, including power cable  
1 ea. measuring cell with 1 ea sieve plate and 1 ea piston
- 1 ea. Hand tamper
- 1 ea. Injection unit with hose for filling
- 150 ml Filling oil
- 1 Stück digital Thermometer
- 1 unit Round filter, diameter 41 mm
- 1 ea. Funnel for filling the material to be tested
- 1 unit Foam plugs, diameter 13 mm

Optional:

- Measuring gauge to determine the remaining interval
- Rotational lock for preventing the piston of the measuring cell from turning
- 1 bottle Calibration sand, coarse
- 1 bottle Calibration sand, fine

<p>Note</p> 	<p>When the Blaine Apparatus is delivered, it is NOT calibrated. <b>Important:</b> do not place the Blaine Apparatus into operation before it has been properly calibrated. Use only the supplied liquid, otherwise the functionality of the device can not be guaranteed.</p>
---	--

## 1.8 Instructions for electrical connection

<p>Danger</p> 	<p>The electrical connections must be made by properly qualified electricians.</p> <p>Before making the power connections, make sure that your power supply is in accordance with the required power and frequency ratings given in these instructions and on the equipment rating plate.</p> <p>The power plug must have a safety device (an overcurrent trip) that protects the system against overcurrent. This device must match the machine voltage, and must be in accordance with the valid regulations. The technical characteristics of this safety device must satisfy the regulations of the standards that apply in the country in which the machine is being installed.</p>
<p>Caution</p> 	<p>The Manufacturer cannot be held liable for any damage that takes place because the above instructions are not followed.</p>

### Electrical tolerances:

Actual voltage:  $\pm 10\%$  of the rated voltage

Frequency:  $\pm 1\%$  of the rated frequency, on a continual basis;  $\pm 2\%$  of the rated frequency, on a short-term basis

The power supply may not be interrupted for longer than 3 ms, and may not be set to zero. Not more than 1 s may lapse between two power outages (cuts).

The power outages (cuts) may not exceed 20% of the voltage peak for more than one cycle. Not more than 1 s may elapse between two power cuts.

The manufacturer cannot be held liable for damages to persons or property that arises because the above instructions have not been observed.

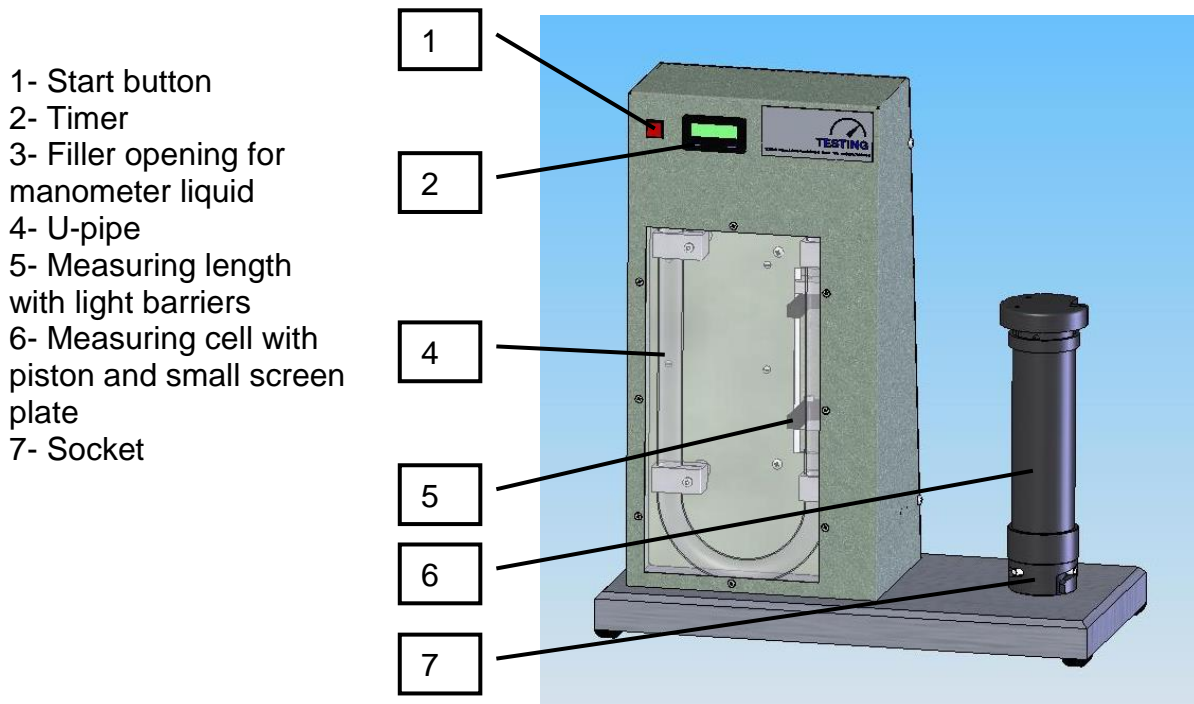
## 2. Characteristics of the apparatus

### 2.1 Basic structural design

The measuring apparatus is mounted on a stable metal plate. A sturdy metal enclosure on the left side of the apparatus contains the U-shaped manometer tube. The User can observe the level of the manometer fluid through a window. The time counter shows the display in seconds. On the right side, the measuring cell can be plugged in and secured with a bayonet connector. The measuring process is initiated by pressing the START button.

The Manufacturer tests the function and liquid tightness of the apparatus before delivery.





The main control switch is on the backside.

## 2.2 Technical data

Power rating:	110-230 V / 50-60 Hz
Measuring cell:	ø 40.6 mm
Volume of the measuring cell:	approx. 73 cm <sup>3</sup>
Dimensions of the Apparatus:	400 mm wide x 200 mm deep x 450 mm high
Weight:	20 kg
Precision of the time measurement:	0.1 s

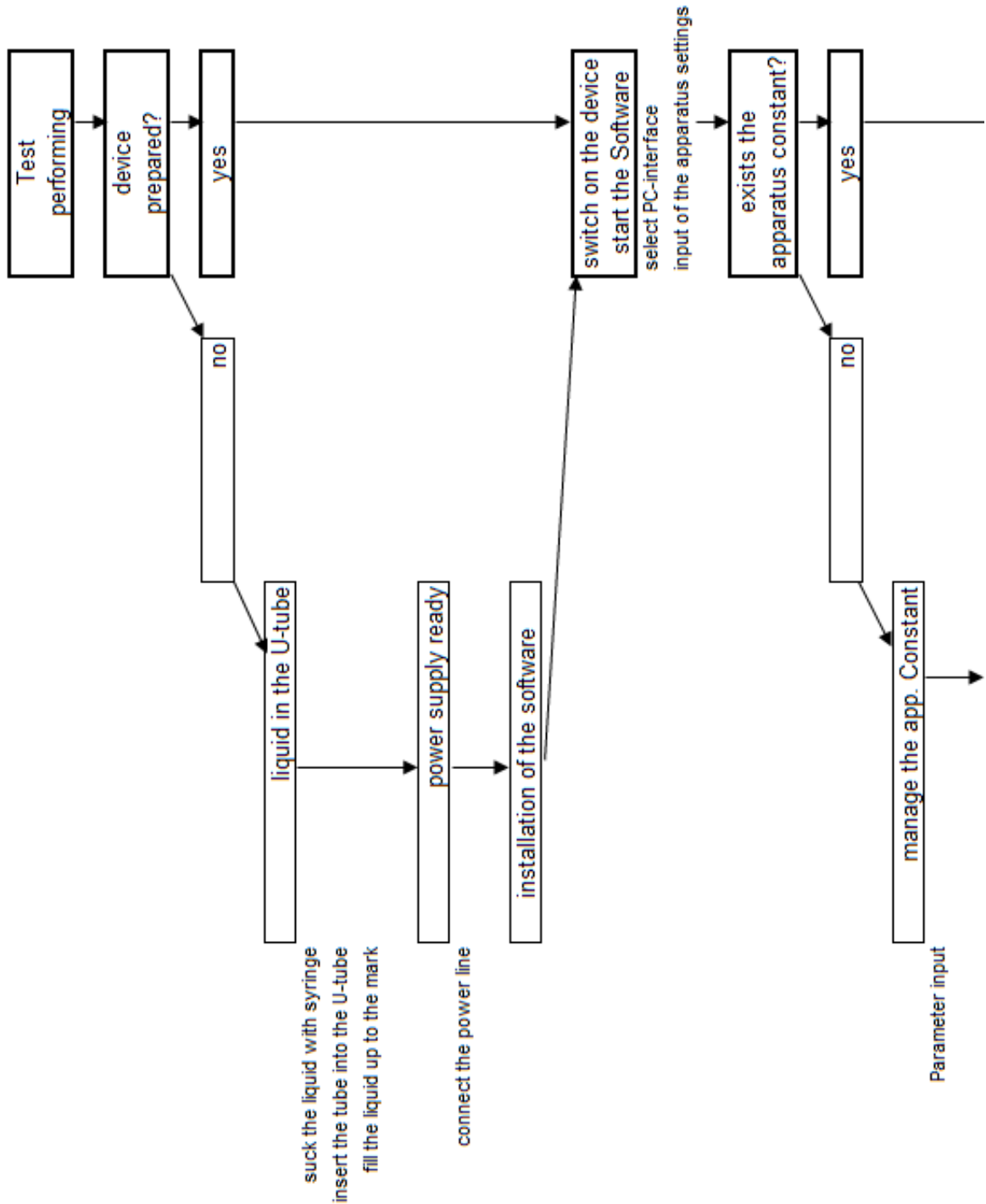
## 3. Placing into operation

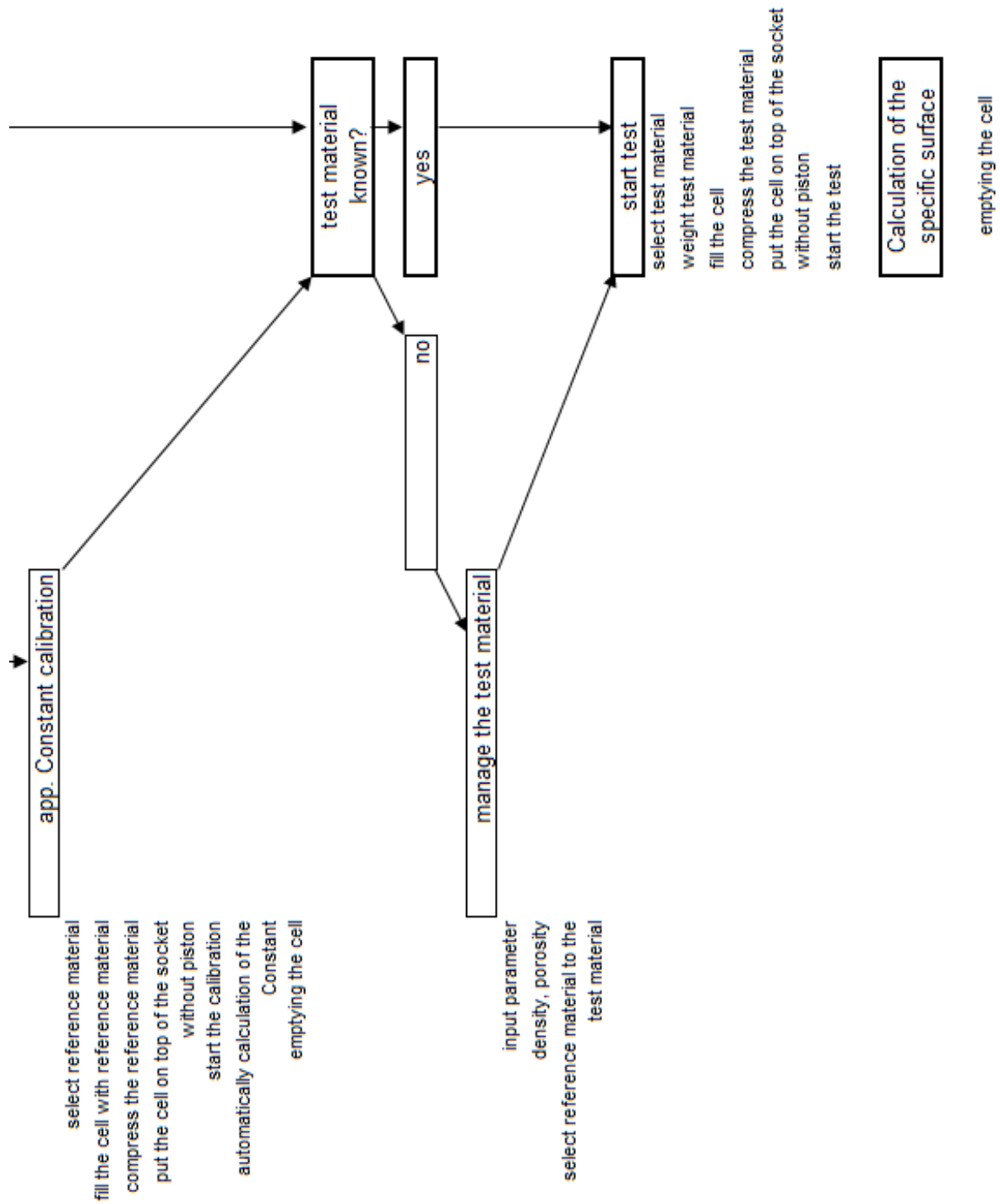
### 3.1 Setting up the apparatus

Set up the Blaine Apparatus on a surface that is level, that is not subject to vibrations, and that can sufficiently support the weight of the apparatus.

Permissible temperature conditions:	In accordance with standard EN 196
Permissible relative humidity:	In accordance with standard EN 196

The following illustration shows briefly the setup procedure.






### 3.2 Connection of the measuring gauge (an optional component)

If the measuring gauge is part of the scope of delivery, then insert this gauge from above, down into the piston. Tighten the hexagon socket head cap screw to secure the measuring gauge. Tighten the screw such that the contact probe can be extended to its full length (13 mm). The value being displayed must be positive. To change the sign of the displayed value (i.e., positive to negative or negative to positive), use the setting on the right side, over the display.



For more information on setting the measuring gauge, please read the enclosed operating instructions.

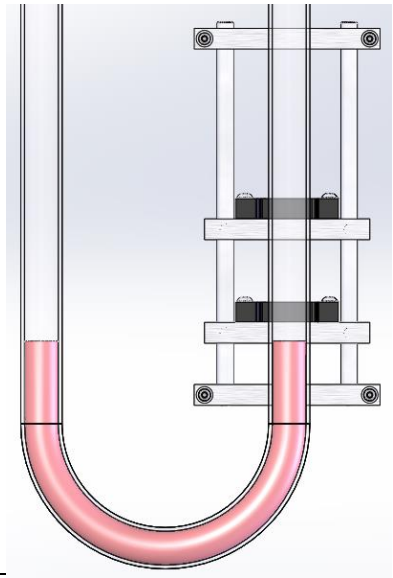
<p>Hinweis</p> 	<p>The gauge is zeroed when the piston is at the top of the cylinder. Before each test, this condition should be checked.</p>
--	---


### 3.3 Filling the U-shaped tube

Fill from the liquid approx. 60 ml by using the injection unit in the U-shaped tube. Before filling the tube, make sure that it is clean and dry.

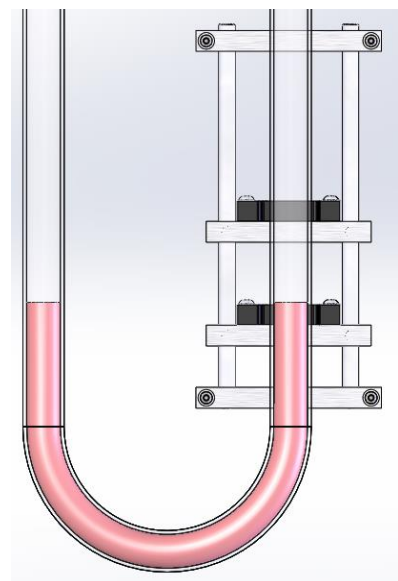
Use the injection unit to remove liquid from the bottle in which it is delivered. Insert the end of the injector hose into the U-shaped tube, on the left side of the apparatus, on the metal enclosure. Make sure that you can see the hose in the U-shaped tube, and also make sure that the manometer liquid actually flows into the tube.

Fill the liquid up to the mark. At regular intervals, the liquid level must be checked. The fluid level must be equal to the mark.

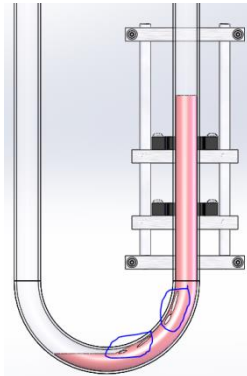


	Caution	The manometer liquid is a mineral hydraulic oil. This liquid can cause serious health.
		Do not pour out the oil through the cone. It could go inside and could cause damage.


If exceed the mark then use the injection with tube to suck out the surplus oil.



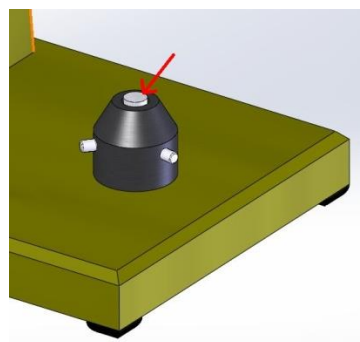
During the step of suction of the manometer liquid, do not allow the liquid to be pulled through the U-bend.




This can have several causes:  
- the pump performance is set too heavy  
- too less liquid in the U-tube

<p>Caution</p> 	<p>Do not pour out the oil. It could cause damage. If exceed the mark then use the injection with tube to suck out the surplus oil.</p>
---	---

A dust filter with diameter of 13 mm must be inserted into the suction support onto which the measuring cell is inserted. You must change this filter at regular and sufficient intervals in order to prevent soiling to the inside of the apparatus interior.



### 3.4 Calibration of the instrument

<p>Note</p> 	<p>When delivered the instrument is not calibrated.</p>
---	---

In order to determine the device constant, the mean is calculated from at least three processing times with three different initial weights. Device constants are determined as described in EN 196-6.

The manufacturer recommends to use a calibration substance to determine the device constant. According to EN 196-6, necessary provisions are to be taken, such as volume, preparation and installation of the powder bed.

Recalibration is required due to abrasion and a frequent utilization and

- when changing
  - manometer liquid
  - the quality of the filter paper
  - the U-pipe
- in case of systematic differences
- after 1000 testings

#### **4. Execution of the test**

Execution of the test, measuring and evaluation is carried out according to DIN EN 196-6. The device is intended for determination of specific powder surfaces, in particular quick determination of operating characteristics, i. e. it is often used as a comparative measuring device for production monitoring.

The screen plate is put into the clean measuring cell and must lie completely flat on the edge of the cell base. A small filter plate is then brought to the screen plate by means of the tamper.

Using the funnel, the weighted sample material is then poured into the prepared measuring cell. The surface must be leveled laterally at the measuring cell by careful shaking or taps. The funnel must be removed and another small filter plate must be applied to the surface of the sample material using the tamper.

By slowly pressing the piston the sample material is now compressed in a way that the piston collar touches the upper edge of the measuring cell. The piston is then lifted a little, turned by 90° and the sample material is compressed again. Eventually the piston is slowly pulled out without decentralizing the sample material.

Now the measuring cell is put on the connecting piece and screwed in.

The measuring process is initiated by pressing the START- button. A pump pushes the liquid over the upper light barrier. The pump then switches off and a valve closes automatically. The sample material has passed through and the liquid level in the U-pipe decreases again or balances. The processing time between the two light barriers is measured and it is indicated on the timer after passing the bottom light barrier.

When the measuring has been completed, the measuring cell is removed from the connecting piece and the sample material is pressed out from the bottom through the tamper.


## 5. Maintenance and cleaning

In case of special maintenance work (e.g., repairs, exchange of parts, and all other work that is not described in this Operating Manual), please get directly in touch with the manufacturer.

The Blaine Apparatus requires practically no maintenance. After long service, we recommend a thorough cleaning and refilling of the U-shaped tube with the required liquid.


If the apparatus has been used for a long time, or if the ambient conditions make an external cleaning of the machine necessary, please proceed as follows:

- Switch off the main power switch on the reverse of the machine.
- Disconnect the apparatus from the power supply.
- Use a brush or vacuum cleaner to remove loose dust on the machine. If necessary, the apparatus can then be cleaned with a moist cloth. Use a normal household cleaning agent for this purpose.

<p>Caution</p> 	<p>Do <b>NOT</b> try to clean the machine with pressurized water, water or other liquid spray, spray water that results in puddles, dripping sponges, or any other unsuitable cleaning methods. If any of these methods are used, the water or other liquid that results can enter the control system and lead to permanent damages to the mechanical, electrical, and/or electronic components of the machine.</p>
--	---

All maintenance work involving components of the machine and/or the electrical system must be conducted by qualified specialists.

It is necessary to install a dust filter with diameter of 13 mm in the suction fittings on which the measuring cell is plugged in. In order to prevent soiling in the inside of the Blaine Apparatus, it is necessary to replace this filter at regular intervals.


<p>Note</p> 	<p>If, for example, the measuring section of the U-shaped tube is modified, or if the manometer fluid is exchanged, this will change the constant of the apparatus. It must then be re-calibrated.</p>
---	--

At regular intervals, the liquid level must be checked. The fluid level must be equal to the mark.




## 6. Troubleshooting

This section describes a number of simple problems tht can be easily solved during work.

<p>Caution</p> 	<p>All maintenance, inspection, testing, and repair work on apparatus components or on the electrical system may be performed <b>ONLY</b> by sufficiently qualified personnel.</p>	
PROBLEM	CAUSE	SOLUTION
The system will not start.	<p>There is no power to the system. The pump or the electrical system is defective.</p> <p>The U-shaped tube is covered with condensation or dirt.</p> <p>The signal of the photoelec. barrier is disturbed</p>	<p>Operate the main power switch correctly. Check the power cable. Check the fuse on the main switch and exchange it if necessary.</p> <p>Clean the U-shaped tube.</p> <p>Remove the back plate and modify the sensitivity</p> <p>Get in touch with the Supplier.</p>
The manometer fluid is not pulled in correctly.	<p>The pump doesn't work or is defective.</p> <p>A valve is defective.</p> <p>The pneumatic lines are loose or have leaks. The U-shaped tube is covered with condensation or dirt.</p> <p>The signal of the photoelec. barrier is disturbed</p> <p>Measuring cell is not used properly and twisted, leak between the measuring cell and the support</p>	<p>Replace the pompe Modify the pump parameter</p> <p>Replace the valve and round filter in the intake fitting. Check the system for leaks</p> <p>Clean the U-shaped tube.</p> <p>Remove the back plate and modify the sensitivity</p> <p>Check the rubber seal and its position in the measuring cell. Check the bayonet closure system</p> <p>Get in touch with the Supplier</p>
The measured values are not correct.	The constant for the apparatus is not correct.	Correctly determine the constant for the system.

	<p>The calibration substance does not properly match the test material.</p> <p>The remaining intervals are not correct.</p> <p>The volume data are not correct.</p> <p>The time metering is not correct. The photoelectric barrier does not function.</p> <p>The measuring cell has not been properly attached, or it has not been turned correctly. There is a leak in the connection between the fittings.</p>	<p>Choose the proper calibration substance to correctly match the test material.</p> <p>Properly set the measurement gauge.</p> <p>Properly determine the volume.</p> <p>Regulate the photoelectric barriers on the potentiometer. Check the PC time metering. Clean the U-shaped tube.</p> <p>Check the rubber seal itself, and its position in the measuring cell. Check the connection provided by the bayonet connector.</p>
--	--	--

<p>Note</p> 	<p>If the device is to be sent for repair, the manometer liquid must be sucked off in order to avoid further damages to the device.</p>
---	---

## 7. Shutting down the system for lengthy periods

If the Blaine Apparatus is scheduled to remain out of operation for a lengthy period of time, please follow these steps:

- Disconnect the apparatus from the power supply.
- Perform all required maintenance work.
- Remove the liquid from the U-shaped tube.
- Oil parts which are not painted.
- Then cover the apparatus to protect it from dust

## 8. Scrapping

If the apparatus will not be used again, we recommend the following steps for scrapping:

- Disconnect the power cable from the power supply.
- Cover all sharp, protruding, or otherwise dangerous parts.
- Disassemble the apparatus and scrap it in accordance with currently valid regulations.

## 9. After-sales service

A great deal of care has been taken to ensure that this Operating Manual is correct. We cannot, however, guarantee that it is without mistakes or errors, or that all information contained herein will continue to remain valid in the event of technical changes.

### 9.1 Date of issue of this Operating Manual

Issue no. 11  
Oct. 2016

### 9.2 Copyright

The copyright to this Operating Manual remains with the company

**TESTING** Bluhm & Feuerherdt GmbH.

This Operating Manual is intended only for the Operator, User, and the User's staff. The information in this Operating Manual may not be:

- Reproduced, or
- Distributed, or
- Provided to any other persons.

Any person acting in violation of the above stipulations may be prosecuted before a court of law.

### 9.3 Contact for spare parts and technical help

If you have any technical questions, or if you require spare parts, please get directly in touch with the following address:

**TESTING Bluhm & Feuerherdt GmbH**

Motzener Str. 26b  
DE – 12277 Berlin  
Germany

Tel.: ++49 30 710 96 45 0  
Fax: ++49 30 710 96 45 98  
[www.testing.de](http://www.testing.de)

**EC Declaration of Conformity in accordance with the Machinery Directive  
2006/42/EC Appendix II 1.A**

The authorised representative established in the community,  
Mr. Feuerherdt  
hereby declares that the following product

Manufacturer: TESTING Bluhm & Feuerherdt GmbH  
Motzener Str. 26b  
12277 Berlin  
Product designation: 1.0210  
Serial number: continuous  
Serial/Type designation: electr. Blaine Apparatus

complies with all of the relevant provisions of the above named guidelines as well as the additional applied guidelines (following) - including any of the amendments thereto which are in force at the time of the declaration.

The following additional EU Directives have been applied:  
Low Voltage Directive 2014/35/EC

The following harmonised standards have been applied:

DIN EN 60204-1 The Safety of Machines - Electrical Equipment of Machines - Part 1:  
General Requirements (corrigendum 2010)  
DIN EN ISO 12100 Safety of machinery - General principles for design - Risk assess-  
ment and risk reduction (corrigendum 2013)

The name and address of the person who has been authorised to compile the technical docu-  
mentation: Mr. Metge

Location: Berlin  
Date: 28/01/2010

A handwritten signature in blue ink, appearing to read 'Feuerherdt'.

(Signature)  
Managing Director

A handwritten signature in blue ink, appearing to read 'S. Metge'.

(Signature)  
Technician

Material Safety Data Sheet

**1. IDENTIFICATION OF THE SUBSTANCE/PREPARATION AND COMPANY/UNDERTAKING**

**Material Name :** Shell Tellus S2 V 15  
**Uses :** Hydraulic oil  
**Product Code :** 001D7747  
**Manufacturer/Supplier :** PT Shell Indonesia  
Talavera Office Park  
22nd-27th Floor  
22-26 Jl. Letjen TB Simatupang Kav.  
Jakarta Selatan 12430  
Indonesia  
**Telephone :** (+62) 2175924700  
**Fax :** (+62) 2175924679  
**Emergency Telephone Number :** (+62) 811 984 290

**2. COMPOSITION/INFORMATION ON INGREDIENTS**

**Preparation Description :** Highly refined mineral oils and additives.  
**Additional Information :** The highly refined mineral oil contains <3% (w/w) DMSO extract, according to IP346.

**3. HAZARDS IDENTIFICATION**

**EC Classification :** Not classified as dangerous under EC criteria.  
**Health Hazards :** Not expected to be a health hazard when used under normal conditions. Prolonged or repeated skin contact without proper cleaning can clog the pores of the skin resulting in disorders such as oil acne/folliculitis. Aspiration into the lungs when swallowed or vomited may cause chemical pneumonitis which can be fatal. High-pressure injection under the skin may cause serious damage including local necrosis. Used oil may contain harmful impurities.  
**Signs and Symptoms :** If material enters lungs, signs and symptoms may include coughing, choking, wheezing, difficulty in breathing, chest congestion, shortness of breath, and/or fever. The onset of respiratory symptoms may be delayed for several hours after exposure. Local necrosis is evidenced by delayed onset of pain and tissue damage a few hours following injection. Oil acne/folliculitis signs and symptoms may include formation of black pustules and spots on the skin of exposed areas. Ingestion may result in nausea, vomiting and/or diarrhoea.  
**Safety Hazards :** Not classified as flammable but will burn.  
**Environmental Hazards :** Not classified as dangerous for the environment.

**4. FIRST AID MEASURES**

**Inhalation :** No treatment necessary under normal conditions of use. If symptoms persist, obtain medical advice.  
**Skin Contact :** Remove contaminated clothing. Flush exposed area with water and follow by washing with soap if available. If persistent irritation occurs, obtain medical attention. When using high pressure equipment, injection of product under the skin can occur. If high pressure injuries occur, the casualty should be sent immediately to a hospital. Do not wait for symptoms to develop. Obtain medical attention even in the absence of apparent wounds.  
**Eye Contact :** Flush eye with copious quantities of water. If persistent irritation occurs, obtain medical attention.  
**Ingestion :** If swallowed, do not induce vomiting; transport to nearest medical facility for additional treatment. If vomiting occurs spontaneously, keep head below hips to prevent aspiration. If any of the following delayed signs and symptoms appear within the next 6 hours, transport to the nearest medical facility: fever greater than 101° F (37° C), shortness of breath, chest congestion or continued coughing or wheezing.  
**Advice to Physician :** Treat symptomatically. Potential for chemical pneumonitis. Consider: gastric lavage with protected airway, administration of activated charcoal. High pressure injection injuries require prompt surgical intervention and possibly steroid therapy, to minimise tissue damage and loss of function. Because entry wounds are small and do not reflect the seriousness of the underlying damage, surgical exploration to determine the extent of involvement may be necessary. Local anaesthetics or hot soaks should be avoided because they can contribute to swelling, vasospasm and ischaemia. Prompt surgical decompression, debridement and evacuation of foreign material should be performed under general anaesthetics, and wide exploration is essential. Call a doctor or poison control center for guidance.

**5. FIRE FIGHTING MEASURES**

Clear fire area of all non-emergency personnel.  
**Specific Hazards :** Hazardous combustion products may include: A complex mixture of airborne solid and liquid particulates and gases (smoke). Carbon monoxide. Unidentified organic and inorganic compounds.  
**Suitable Extinguishing Media:** Foam, water spray or fog. Dry chemical powder, carbon dioxide, sand or earth may be used for small fires only.  
**Unsuitable Extinguishing Media:** Do not use water in a jet.  
**Protective Equipment for Firefighters** Proper protective equipment including breathing apparatus must be worn when approaching a fire in a confined space.

**6. ACCIDENTAL RELEASE MEASURES**

Avoid contact with spilled or released material. For guidance on selection of personal protective equipment see Chapter 8 of this Material Safety Data Sheet. See Chapter 13 for information on disposal. Observe the relevant local and international regulations.  
**Protective measures :** Avoid contact with skin and eyes. Use appropriate containment to avoid environmental contamination. Prevent from spreading or entering drains, ditches or rivers by using sand, earth, or other appropriate barriers.  
**Clean Up Methods :** Slippery when spilt. Avoid accidents, clean up immediately. Prevent from spreading by making a barrier with sand, earth or other containment material. Reclaim liquid directly or in an absorbent. Soak up residue with an absorbent such as clay, sand or other suitable material and dispose of properly.  
**Additional Advice :** Local authorities should be advised if significant spillages cannot be contained.

**7. HANDLING AND STORAGE**

**General Precautions :** Use local exhaust ventilation if there is risk of inhalation of vapours, mists or aerosols. Properly dispose of any contaminated rags or cleaning materials in order to prevent fires. Use the information in this data

sheet as input to a risk assessment of local circumstances to help determine appropriate controls for safe handling, storage and disposal of this material.

**Handling :** Avoid prolonged or repeated contact with skin. Avoid inhaling vapour and/or mists. When handling product in drums, safety footwear should be worn and proper handling equipment should be used.

**Storage :** Keep container tightly closed and in a cool, well-ventilated place. Use properly labelled and closeable containers. Storage Temperature: 0 - 50 °C / 32 - 122 °F

**Recommended Materials :** For containers or container linings, use mild steel or high density polyethylene.

**Unsuitable Materials :** PVC.

**Additional Information :** Polyethylene containers should not be exposed to high temperatures because of possible risk of distortion.

### 8. EXPOSURE CONTROLS/PERSONAL PROTECTION

If the American Conference of Governmental Industrial Hygienists (ACGIH) value is provided on this document, it is provided for information only.

#### Occupational Exposure Limits

Material	Source	Type	ppm	mg/m3	Notation
Oil mist, mineral	ACGIH	TWA [Mist.]		5 mg/m3	
	ACGIH	STEL [Mist.]		10 mg/m3	
	ID OEL	NAB [Mist.]		5 mg/m3	

#### Biological Exposure Index (BEI) - See reference for full details

Data not available

**Exposure Controls :** The level of protection and types of controls necessary will vary depending upon potential exposure conditions. Select controls based on a risk assessment of local circumstances. Appropriate measures include: Adequate ventilation to control airborne concentrations. Where material is heated, sprayed or mist formed, there is greater potential for airborne concentrations to be generated.

**Personal Protective Equipment:** Personal protective equipment (PPE) should meet recommended national standards. Check with PPE suppliers.

**Respiratory Protection :** No respiratory protection is ordinarily required under normal conditions of use. In accordance with good industrial hygiene practices, precautions should be taken to avoid breathing of material. If engineering controls do not maintain airborne concentrations to a level which is adequate to protect worker health, select respiratory protection equipment suitable for the specific conditions of use and meeting relevant legislation. Check with respiratory protective equipment suppliers. Where air-filtering respirators are suitable, select an appropriate combination of mask and filter. Select a filter suitable for combined particulate/organic gases and vapours [boiling point>65°C(149 °F)].

**Hand Protection :** Where hand contact with the product may occur the use of gloves approved to relevant standards (e.g. Europe: EN374, US: F739) made from the following materials may provide suitable chemical protection: PVC, neoprene or nitrile rubber gloves. Suitability and durability of a glove is dependent on usage, e.g. frequency and duration of contact, chemical resistance of glove material, glove thickness, dexterity. Always seek advice from glove suppliers. Contaminated gloves should be replaced. Personal hygiene is a key element of effective hand care. Gloves must only be worn on clean hands. After using gloves, hands should be washed and dried thoroughly. Application of a non-perfumed moisturizer is recommended.

**Eye Protection :** Wear safety glasses or full face shield if splashes are likely to occur.

**Protective Clothing :** Skin protection is not required under normal conditions of use. It is good practice to wear chemical resistant gloves.

**Monitoring Methods :** Monitoring of the concentration of substances in the breathing zone of workers or in the general workplace may be required to confirm compliance with an OEL and adequacy of exposure controls. For some substances biological monitoring may also be appropriate.

**Environmental Exposure Controls:** Minimise release to the environment. An environmental assessment must be made to ensure compliance with local environmental legislation.

### 9. PHYSICAL AND CHEMICAL PROPERTIES

**Appearance :** Amber. Liquid at room temperature.

**Odour :** Slight hydrocarbon.

**pH :** Not applicable.

**Initial Boiling Point and :> 280 °C / 536 °F estimated value(s)**

**Boiling Range**

**Pour point :** Typical -42 °C / -44 °F

**Flash point :** Typical 170 °C / 338 °F (COC)

**Upper / lower Flammability or Explosion limits:Typical 1 - 10 %(V) (based on mineral oil)**

**Auto-ignition temperature :** > 320 °C / 608 °F

**Vapour pressure :** < 0.5 Pa at 20 °C / 68 °F (estimated value(s))

**Specific gravity :** Typical 0.872 at 15 °C / 59 °F

**Density :** Typical 872 kg/m3 at 15 °C / 59 °F

**Water solubility :** Negligible.

**Solubility in other solvents :** Data not available

**n-octanol/water partition coefficient (log Pow) > 6 (based on information on similar products)**

**Dynamic viscosity :** Data not available

**Kinematic viscosity :** Typical 15 mm2/s at 40 °C / 104 °F

**Vapour density (air=1) :** > 1 (estimated value(s))

**Evaporation rate (nBuAc=1) :** Data not available

**Decomposition Temperature:** Data not available

### 10. STABILITY AND REACTIVITY

**Stability :** Stable.

**Conditions to Avoid :** Extremes of temperature and direct sunlight.

**Materials to Avoid :** Strong oxidising agents.

**Hazardous Decomposition Products** Hazardous decomposition products are not expected to form during normal storage.

#### 11. TOXICOLOGICAL INFORMATION

<b>Basis for Assessment :</b>	Information given is based on data on the components and the toxicology of similar products.
<b>Acute Oral Toxicity :</b>	Expected to be of low toxicity: LD50 > 5000 mg/kg , Rat Aspiration into the lungs may cause chemical pneumonitis which can be fatal.
<b>Acute Dermal Toxicity :</b>	Expected to be of low toxicity: LD50 > 5000 mg/kg , Rabbit
<b>Acute Inhalation Toxicity :</b>	Not considered to be an inhalation hazard under normal conditions of use.
<b>Skin Irritation :</b>	Expected to be slightly irritating. Prolonged or repeated skin contact without proper cleaning can clog the pores of the skin resulting in disorders such as oil acne/folliculitis.
<b>Eye Irritation :</b>	Expected to be slightly irritating.
<b>Respiratory Irritation :</b>	Inhalation of vapours or mists may cause irritation.
<b>Sensitisation :</b>	Not expected to be a skin sensitiser.
<b>Repeated Dose Toxicity :</b>	Not expected to be a hazard.
<b>Mutagenicity :</b>	Not considered a mutagenic hazard.
<b>Carcinogenicity :</b>	Product contains mineral oils of types shown to be oncogenic in animal skin-painting studies. Highly refined mineral oils are not classified as carcinogenic by the International Agency for Research on Cancer (IARC). Other components are not known to be associated with carcinogenic effects.
<b>Reproductive and Developmental Toxicity</b>	Not expected to be a hazard.
<b>Additional Information :</b>	Used oils may contain harmful impurities that have accumulated during use. The concentration of such impurities will depend on use and they may present risks to health and the environment on disposal. ALL used oil should be handled with caution and skin contact avoided as far as possible. High pressure injection of product into the skin may lead to local necrosis if the product is not surgically removed.

#### 12. ECOLOGICAL INFORMATION

Ecotoxicological data have not been determined specifically for this product. Information given is based on a knowledge of the components and the ecotoxicology of similar products.	
<b>Acute Toxicity :</b>	Poorly soluble mixture. May cause physical fouling of aquatic organisms. Expected to be practically non toxic: LL/EL/IL50 > 100 mg/l (to aquatic organisms) (LL/EL50 expressed as the nominal amount of product required to prepare aqueous test extract). Mineral oil is not expected to cause any chronic effects to aquatic organisms at concentrations less than 1 mg/l.
<b>Microorganisms :</b>	Data not available
<b>Mobility :</b>	Liquid under most environmental conditions. Floats on water. If it enters soil, it will adsorb to soil particles and will not be mobile.
<b>Persistence/degradability :</b>	Expected to be not readily biodegradable. Major constituents are expected to be inherently biodegradable, but the product contains components that may persist in the environment.
<b>Bioaccumulation :</b>	Contains components with the potential to bioaccumulate.
<b>Other Adverse Effects :</b>	Product is a mixture of non-volatile components, which are not expected to be released to air in any significant quantities. Not expected to have ozone depletion potential, photochemical ozone creation potential or global warming potential.

#### 13. DISPOSAL CONSIDERATIONS

<b>Material Disposal :</b>	Recover or recycle if possible. It is the responsibility of the waste generator to determine the toxicity and physical properties of the material generated to determine the proper waste classification and disposal methods in compliance with applicable regulations. Do not dispose into the environment, in drains or in water courses.
<b>Container Disposal :</b>	Dispose in accordance with prevailing regulations, preferably to a recognised collector or contractor. The competence of the collector or contractor should be established beforehand.
<b>Local Legislation :</b>	Disposal should be in accordance with applicable regional, national, and local laws and regulations.

#### 14. TRANSPORT INFORMATION

<b>Land (as per ADR classification): Not regulated</b>	This material is not classified as dangerous under ADR regulations.
<b>IMDG</b>	This material is not classified as dangerous under IMDG regulations.
<b>IATA (Country variations may apply)</b>	This material is not classified as dangerous under IATA regulations.

#### 15. REGULATORY INFORMATION

The regulatory information is not intended to be comprehensive. Other regulations may apply to this material.

<b>EC Classification :</b>	Not classified as dangerous under EC criteria.
<b>EC Symbols :</b>	No Hazard Symbol required
<b>EC Risk Phrases :</b>	Not classified.
<b>EC Safety Phrases :</b>	Not classified.

#### **Chemical Inventory Status**

<b>EINECS :</b>	All components listed or polymer exempt.
<b>TSCA :</b>	All components listed.

#### 16. OTHER INFORMATION

<b>R-phrases(s)</b>	Not classified.
<b>MSDS Version Number :</b>	1.0
<b>MSDS Effective Date :</b>	15.10.2010
<b>MSDS Revisions :</b>	A vertical bar ( ) in the left margin indicates an amendment from the previous version.
<b>MSDS Distribution :</b>	The information in this document should be made available to all who may handle the product.
<b>Disclaimer :</b>	This information is based on our current knowledge and is intended to describe the product for the purposes of health, safety and environmental requirements only. It should not therefore be construed as guaranteeing any specific property of the product.